

**MEGLADON<sup>®</sup>**  
MANUFACTURING GROUP, LTD

*A TyRex Technology Family Company*

**Your  
Fiber Optic  
Solutions  
Partner**

TYREX  
MANUFACTURING  
SOLUTIONS  
QUALITY  
TERMINATION  
CONSULTATION  
FIBER OPTIC  
EXPERT TRUN  
FIBER DISTRIBUTION  
TESTING & VERIFICATION  
PLANNING MANUFACTURING  
SPlicing  
PREMISE JUMPERS ENDFACE COUPLERS  
SPLICES HLC<sup>®</sup> SC  
CUSTOM STRATEGIES FIBER DISTRIBUTION CABLING  
CONNECTION TERMINATION PROCESS PRODUCTION EXPERT  
CABLING PLANNING PREMISE JUMPERS MANUFACTURING



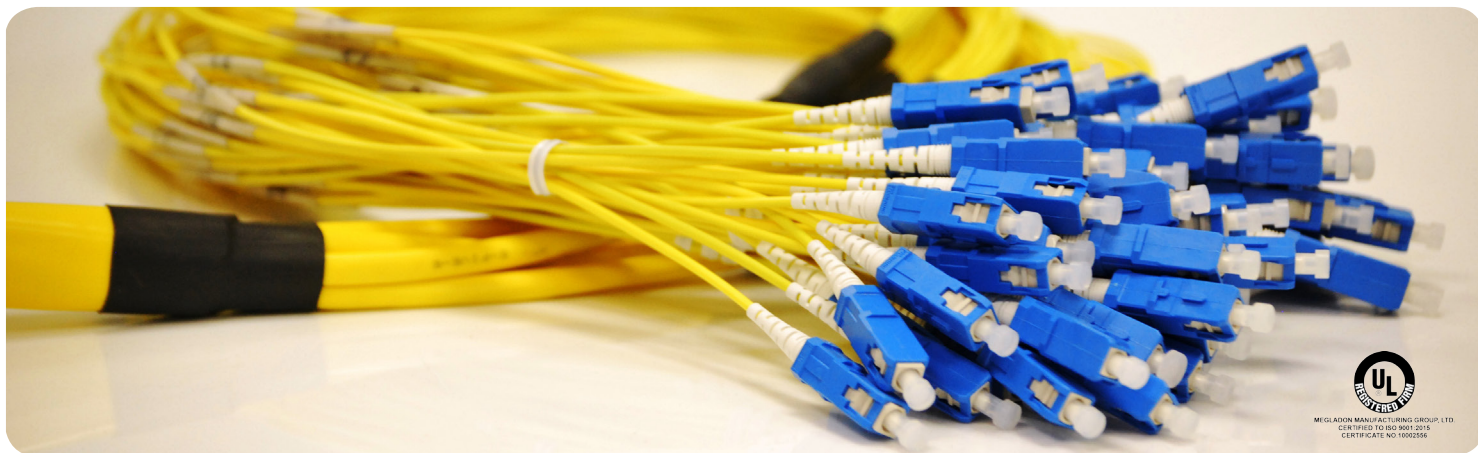
## ABOUT US

A global industry leader in fiber optic connectivity, **Megladon** has spent 15 years developing and perfecting the HLC® interconnect. Our patented technology and process results in the only reference-grade interconnect that is reliable, rugged, repeatable and provides maximum performance. With millions of products deployed worldwide, our fiber optic technology has been proven time and again to solve many of the problems encountered in network deployment and maintenance. We have also used the HLC process as the foundation to develop unique passive fiber optic solutions for our customers.



## HLC® SCRATCHGUARD®

*The Megladon Difference*



The **Hardened Lens Contact (HLC)** process is a patented termination procedure that yields significant benefits in endface durability and overall optical performance. In the place of the typical scribe step in fiber termination, Megladon uses a CO2 laser to traverse the entire mating surface. This process changes the physical characteristics of the glass and creates an integrated lens at the mating surface.

### Durability

The HLC laser process changes the physical properties of the glass at the endface to create a surface that is harder and smoother than before. These changes create a mating surface that is scratch-resistant and will withstand a higher number of mates relative to standard connectors. Extensive testing has proven that HLC connectors do not degrade in performance over the course of 1000 mates.

### Performance

The integrated lens formed by the HLC laser process creates a connector that consistently performs at reference-grade levels. Both SM and MM terminations yield best-in-class IL and ORL, and boast reference-grade endface geometry as well (GR-326 compliant). All HLC terminations are fully interoperable with standard / existing terminations and will increase the performance of any application.

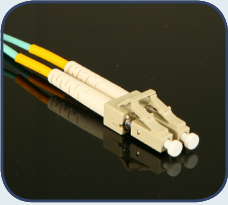
# PRODUCTS



## ► **MPO / MTP® Distribution & Assemblies**

Meglodon offers a full suite of MPO / MTP products to support the increasing need for high density distribution. From jumper and fanout cables to fiber distribution modules, we can provide you with all of the necessary components to deploy MPO / MTP connectors in your networks.

- High Density MPO Fiber Distribution Cassettes
- MPO Fiber Distribution Cassettes
- MPO / MTP Patch Cables
- High Density Rack Mount Fiber Management Panel
- MPO / MTP Fanout & Trunk Cables



## ► **SM & MM Premise Jumpers**

Meglodon incorporates the HLC Termination process into all of our Premise Jumpers. HLC enables reference-grade performance from all connections and creates a durable endface less likely to be damaged from basic handling and use. We stock all major glass and connector varieties to ensure a rapid response to your needs.

- SM Patch Cords
- MM Patch Cords
- Mode Conditioning Cables



## ► **Indoor Trunk Assemblies**

From 4 to 144 fibers at a time, we can create a custom premise trunk cable for your application. We stock a large variety of fiber counts in both SM and MM, and can build custom breakout configurations. Integrating HLC technology with pre-terminated trunk cables ensures the highest quality of transmission and rapid deployments.

- Pigtails
- SM Trunk Cables
- MM Trunk Cables



## ► **Fiber Distribution**

Meglodon has a wide variety of Fiber Distribution products designed to make installations easier for the technician and provide scalable solutions for future deployments. Our Distribution Panels come in a variety of sizes and can be customized depending on the needs of the deployment. We also stock adapter plates, mating adapters, and many other fiber management accessories.

- 4U / 2U / 1U Distribution Panels
- Wall Mount Fiber Enclosure



## ► **OSP, Indoor / Outdoor, Node Cables**

Outdoor cables must withstand a variety of harsh environmental conditions. Meglodon outdoor cables are designed to meet all industry standards. We have selected unique raw materials that enable our breakouts and terminations to perform in the most extreme applications and added the HLC process to create the most reliable cables on the market.

- SM Node Cables
- Outdoor Trunk Cables
- FTTx Drop Cable
- Remote Radio Head Cables
- ODVA Industrial Assemblies



## ► **WDM & Couplers / Splitters**

Meglodon WDM solutions allow operators to expand the use of existing fiber infrastructure with multiwavelength transmission and support growing trends in cell backhaul and RfOG. We have a full suite of WDM, coupler and splitter products designed to increase the performance of your passive optical network.

- 2x8ch Compact CWDM
- SM Couplers / Splitters
- LGX CWDM Modules
- MM Couplers / Splitters
- SM LGX Splitters



## ► **Test & Verification Assemblies**

Accuracy and precision in fiber testing requires a robust Test Reference Cable. Meglodon specializes in cable assemblies that meet stringent geometrical and performance standards, but also possess durability characteristics that enable reliable field testing. We also support verification efforts in Network Simulation and build custom launch cables for OTDR testing.

- Pulse Suppression Boxes
- OTDR Launch Cables
- Network Simulator
- Simplex & Duplex Reference Cords

12317 Technology Blvd., Ste. 100, Austin, TX 78727

Phone: (512) 623-4694 · Fax: (512) 623-4790 · [tyrexmfg.com](http://tyrexmfg.com)

## CONTACT US

### Austin, TX

*Andrew Cooper*

**CEO & Partner**

C: (512) 431-3858

[acooper@tyrexmfg.com](mailto:acooper@tyrexmfg.com)

*Matthew Ache*

**President & Partner**

C: (512) 577-5233

[mache@tyrexmfg.com](mailto:mache@tyrexmfg.com)

*Martin Johnson*

**Executive Vice President**

C: (512) 348-5670

[mjohnson@tyrexmfg.com](mailto:mjohnson@tyrexmfg.com)

*John Sansoucy*

**Regional Sales Executive**

C: (512) 294-9592

[jsansoucy@irexmfg.com](mailto:jsansoucy@irexmfg.com)

### Nashville, TN

*Bill Brainerd*

**National Director Bus. Dev.**

C: (615) 491-6754

[bbrainerd@saberex.com](mailto:bbrainerd@saberex.com)

### Mount Airy, NC

**SabeRex - North Carolina**

101 Technology Lane

Mount Airy, NC 27030

D: (512) 623-4694

[saberex.com](http://saberex.com)

### China, Vietnam, Taiwan & India

**ACT Partnership**

Industrial District Lian Tang

Wei Area, He Ao Village

Keng Gang Town, Shen Zhen

Guang Dong Province, China

**Software Development Partnership**

G.C. Technologies, India

## OUR TYREX FAMILY



*Family of Technology Companies*

12317 Technology Blvd., Ste. 100

Austin, TX 78727

Phone: (512) 623-4694

Fax: (512) 623-4790

[tyrexmfg.com](http://tyrexmfg.com)

### Signature Nonprofit



*Illuminating,  
Connecting  
& Educating*  
(800) 232-4810  
[recognizegood.org](http://recognizegood.org)



**System Assembly**  
(512) 623-4694  
[arctosassembly.com](http://arctosassembly.com)



**Reliability Testing**  
(512) 490-2294  
[austinrl.com](http://austinrl.com)



**DLP® Solutions**  
(512) 617-4700  
[dlinnovations.com](http://dlinnovations.com)



**Custom Cables**  
(512) 835-1200  
[irexmfg.com](http://irexmfg.com)



**Fiber Optics**  
(512) 491-0006  
[megladonmfg.com](http://megladonmfg.com)



**Software & IT**  
(512) 623-4694  
[saberdata.com](http://saberdata.com)



**Technology Solutions**  
(512) 623-4694  
[saberex.com](http://saberex.com)



**3D Printing Design &  
Product Development**  
(512) 623-4694  
[tekrex.com](http://tekrex.com)

**TyRex Family  
Associated Entities**

