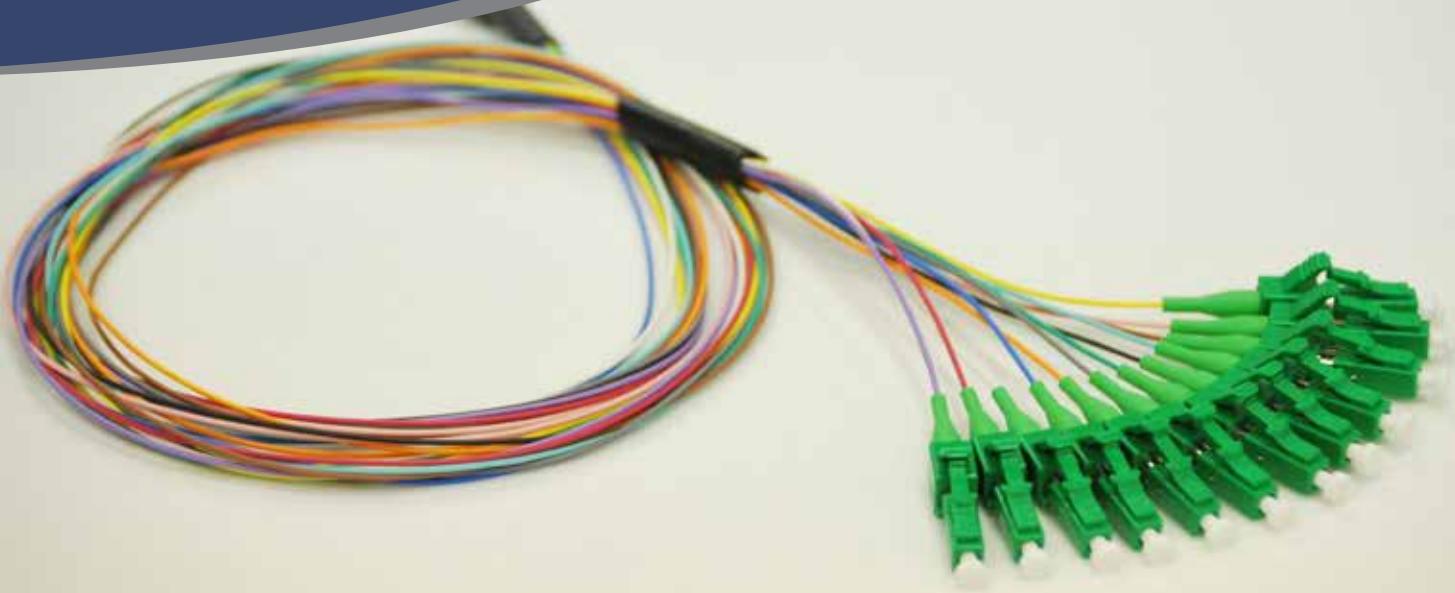


# MEGLADON<sup>®</sup>

MANUFACTURING GROUP, LTD

A TyRex Technology Family Company



## HLC<sup>®</sup> SCRATCHGUARD<sup>®</sup> Singlemode Pigtails

### *The Megladon Difference*

The **Singlemode (SM) Pigtails** manufactured by Megladon exceed industry standards for optical performance and durability and are designed to support splice based cable installations. Every pigtail is built from the highest quality materials from the top manufacturers in the industry, and all assemblies are factory terminated and tested to the highest industry standards, including GR-326. Pigtails can be packaged according to the customer's needs and can be provided in 6 or 12 packs to ease installation.

Megladon is capable of terminating all common fiber optic connectors, including SC, LC and MPO / MTP<sup>®</sup> varieties.

All terminated assemblies utilize Megladon's patented HLC termination process – providing industry leading performance and durability.

**For more information on Megladon's HLC process and products, please visit [megladonmfg.com](http://megladonmfg.com).**

### KEY BENEFITS

- ✓ Exclusive HLC Termination Process
- ✓ Reference Grade IL & ORL Performance
- ✓ SCRATCHGUARD Durable Mating Surface
- ✓ GR-326 Compliant Materials & Geometry
- ✓ SMF & Bend Insensitive Glass Types available
- ✓ Built to specified lengths
- ✓ Lower installation labor costs

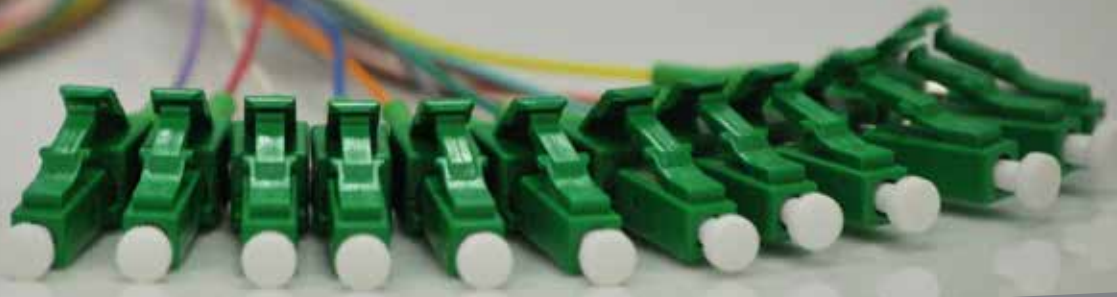
### APPLICATIONS

- ▶ Fusion Splicing
- ▶ Indoor & OSP Trunk Cable Installs
- ▶ Cable Field Repair
- ▶ Fiber Distribution



MEGLADON MANUFACTURING GROUP, LTD.  
CERTIFIED TO ISO 9001:2015  
CERTIFICATE NO. 1092256

# HLC® SCRATCHGUARD® Singlemode Pigtails



## PERFORMANCE CHARACTERISTICS

## ENVIRONMENTAL CHARACTERISTICS

Megladon HLC SCRATCHGUARD SM Pigtails			
Wavelength 1310 & 1550	Min	Max	Units
Initial Insertion Loss (UPC)		-0.2	dB
Initial Return Loss (UPC)		-58	dB
Initial Insertion Loss (APCHLC)		-0.2	dB
Initial Return Loss (APCHLC)		-70	dB
Connector Repeatability (IL Change)		0.05	dB
Temperature Cycling (IL Change)		0.05	dB
Temperature Cycling (RL Change)		3	dB
Vibration Loss (IL Change)		0.05	dB
Vibration Loss (RL Change)		3	dB
Cable Retention Loss (IL Change)		0.1	dB
Cable Retention Loss (RL Change)		5	dB

Megladon HLC SCRATCHGUARD SM Pigtails			
	Min	Max	Units
Storage Temperature	-40	85	C
Humidity	5	95	% Relative
SM Optical Wavelength	1250	1640	nm
Radius of Curvature	10	20	mm
Apex Offset	0	25	um
Fiber Height	-50	25	nm
Angle (HLC)	-0.2	0.2	degrees
Angle (APCHLC)	7.8	8.2	degrees

## PART NUMBER GENERATOR

1	2	3	4	5	6	7
Glass Type	Fiber Count	Connectors	Connectors	Breakout Diameter	Cable Type	Breakout Length
<b>1:</b> SMF	<b>Z:</b> 2 fiber	<b>A:</b> SCHLC	<b>A:</b> SCHLC	<b>1:</b> 900um	<b>1:</b> Indoor TB	<b>1:</b> 24 in.
<b>7:</b> SM BB	<b>1:</b> 6 fiber	<b>B:</b> FCHLC	<b>B:</b> FCHLC	<b>2:</b> 2.0mm	<b>5:</b> Indoor/Outdoor TB	<b>2:</b> 36 in.
<b>8:</b> SM BIXS	<b>2:</b> 12 fiber	<b>C:</b> STHLC	<b>C:</b> STHLC	<b>4:</b> 3.0mm	<b>6:</b> Indoor TB Plenum	<b>3:</b> 12 in.
	<b>3:</b> 24 fiber	<b>D:</b> LCHLC	<b>D:</b> LCHLC			<b>4:</b> 18 in.
	<b>4:</b> 36 fiber	<b>R:</b> SCAPCHLC	<b>R:</b> SCAPCHLC			<b>5:</b> 30 in.
	<b>5:</b> 48 fiber	<b>J:</b> LCAPCHLC	<b>J:</b> LCAPCHLC			<b>0:</b> other
	<b>6:</b> 72 fiber		<b>X:</b> Pigtail			
	<b>7:</b> 96 fiber					
	<b>8:</b> 144 fiber					

8	8	8	9
Length	Length	Length	Units
Please include 3 Digits for Length Use "0" as place holder			<b>M:</b> Meter
			<b>F:</b> Foot

# MEGLADON®

MANUFACTURING GROUP, LTD

**Your Fiber Optic Solutions Partner • Reliable - Rugged - Repeatable**

12317 Technology Blvd., Ste. 100 • Austin, Texas • (512) 491-0006 • megladonmfg.com