

# MEGLADON<sup>®</sup>

MANUFACTURING GROUP, LTD

A TyRex Technology Family Company



## MPO / MTP<sup>®</sup> Patch Cables

### *The Megladon Difference*

Megladon manufactures **MPO/MTP Patch Cables** to the highest standards, and utilizes the highest quality materials the industry has to offer. All cables are fully tested to exceed industry performance and geometry standards. Our MPO / MTP cables are designed to support high-density deployments, and compliment our other MPO / MTP distribution products.

**For more information on Megladon's HLC<sup>®</sup> process and products, please visit [megladonmfg.com](http://megladonmfg.com).**

### KEY BENEFITS

- ✓ Factory-Terminated Solution provides highest level of performance and reliability
- ✓ Cables utilize the highest quality components from industry leaders
- ✓ Pre-Configured Cables help save Installation Time and Costs

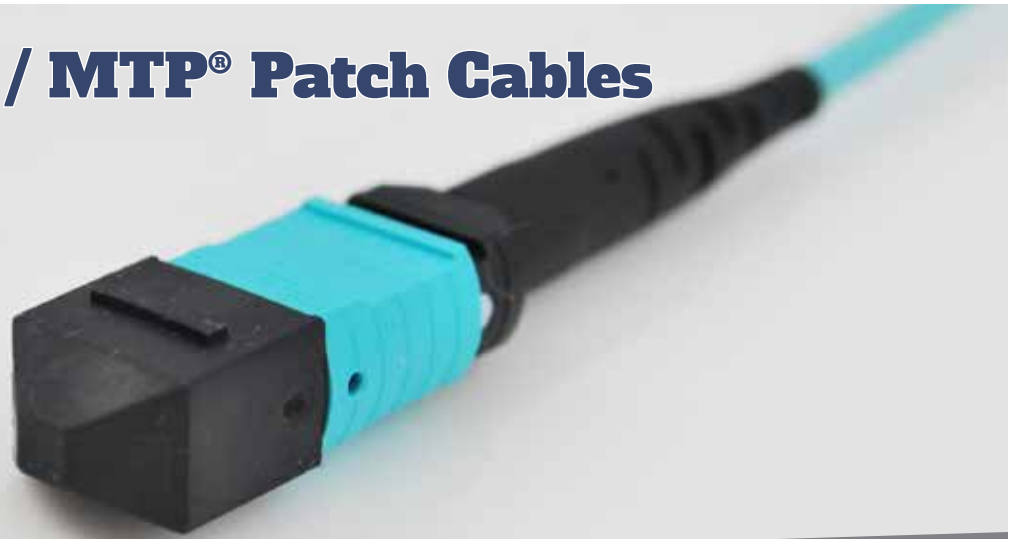
### APPLICATIONS

- ▶ Backbone Installations
- ▶ Horizontal Cabling
- ▶ Cross Connects
- ▶ Data Centers



MEGLADON MANUFACTURING GROUP, LTD.  
CERTIFIED TO ISO 9001:2015  
CERTIFICATE NO. 1092256

# MPO / MTP® Patch Cables



## FEATURES

- ▶ Available with Standard or Elite, 12 or 24 Fiber MPO / MTP Connector Options
- ▶ Riser, Plenum, LSZH Jacket Options
- ▶ Ribbon and 3mm Round Jacket Options, custom length
- ▶ All common SM and MM Fibers available
- ▶ MTP® is a registered trademark of USConec

## PERFORMANCE CHARACTERISTICS

Megladon MPO / MTP Patch Cables			
<i>Singlemode MPO / MTP Standard</i>			
	<i>Typical</i>	<i>Max</i>	<i>Units</i>
Insertion Loss (APC, 8 deg.)	0.25	0.5	dB
Reflectance (APC, 8 deg.)		-55	dB

Megladon MPO / MTP Patch Cables			
<i>Multimode MPO / MTP Standard</i>			
	<i>Typical</i>	<i>Max</i>	<i>Units</i>
Insertion Loss	0.2	0.5	dB
Reflectance		-20	dB

Megladon MPO / MTP Patch Cables			
<i>Singlemode MTP Elite</i>			
	<i>Typical</i>	<i>Max</i>	<i>Units</i>
Insertion Loss (APC, 8 deg.)	0.1	0.35	dB
Reflectance (APC, 8 deg.)		-55	dB

Megladon MPO / MTP Patch Cables			
<i>Multimode MTP Elite</i>			
	<i>Typical</i>	<i>Max</i>	<i>Units</i>
Insertion Loss	0.1	0.35	dB
Reflectance		-20	dB

**MEGLADON**®  
MANUFACTURING GROUP, LTD

**Your Fiber Optic Solutions Partner • Reliable - Rugged - Repeatable**

12317 Technology Blvd., Ste. 100 • Austin, Texas • (512) 491-0006 • megladonmfg.com