

MEGLADON[®]

MANUFACTURING GROUP, LTD

A TyRex Technology Family Company



MPO / MTP[®] Fanout & Trunk Cables

The Megladon Difference

Megladon offers a full suite of **MPO / MTP Fanout & Trunk Cables** that can be custom built for any application. All cables come factory-terminated and pre-tested, ensuring top performance and ease of installation. Fanout assemblies can be built with any single fiber connector and any major fiber type. These cables are designed to work in conjunction with our MPO Fiber Distribution products.

For more information on Megladon's HLC[®] process and products, please visit megladonmfg.com.

KEY BENEFITS

- ✓ Factory-Terminated Solution provides highest level of performance and reliability
- ✓ Available in MTP-Single Fiber Connectors or MTP-MTP Trunk Cables
- ✓ Pre-Configured Cables help save Installation Time and Costs

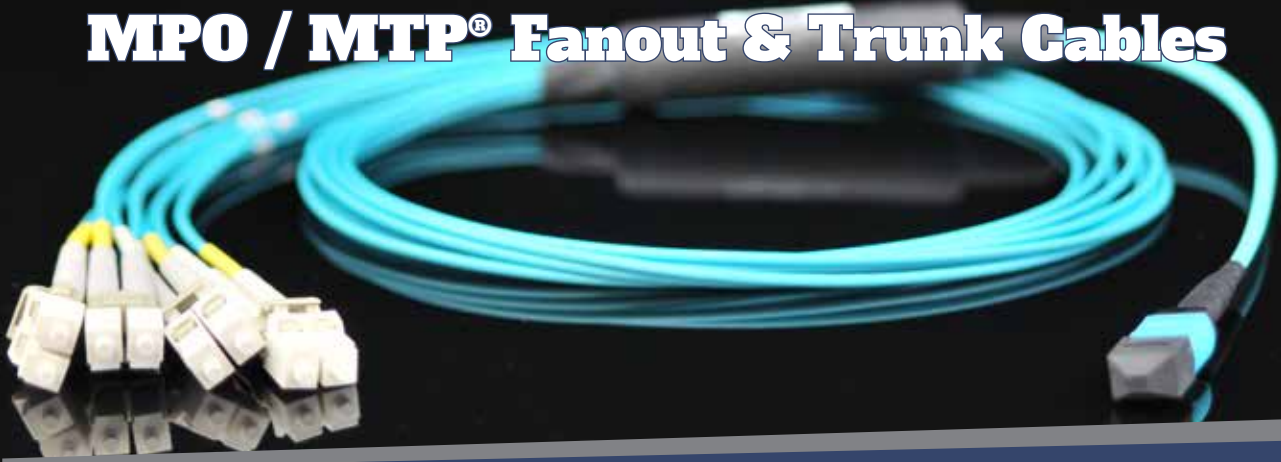
APPLICATIONS

- ▶ Backbone Installations
- ▶ Horizontal Cabling
- ▶ Cross Connects
- ▶ Data Centers



MEGLADON MANUFACTURING GROUP, LTD.
CERTIFIED TO ISO 9001:2015
CERTIFICATE NO. 1088256

MPO / MTP® Fanout & Trunk Cables



FEATURES

- ▶ Available with Standard or Elite, 12 or 24 Fiber MPO / MTP Connector Options
- ▶ Riser, Plenum, LSZH Jacket Options; Armored and Non-Armored
- ▶ Fiber Counts from 4-216, SMF and MMF Fiber available
- ▶ 2mm, 3mm and 900um Fanout Diameters, custom length
- ▶ Fanout Side can be built with all major Single Fiber Connector Types (SC, LC, ST, FC)
- ▶ MTP® is a registered trademark of USConec

PERFORMANCE CHARACTERISTICS

| Megladon MPO / MTP Fanout & Trunk Cables | | | |
|--|----------------|------------|--------------|
| <i>Singlemode MPO / MTP Standard</i> | | | |
| | <i>Typical</i> | <i>Max</i> | <i>Units</i> |
| Insertion Loss (APC, 8 deg.) | 0.25 | 0.5 | dB |
| Reflectance (APC, 8 deg.) | | -55 | dB |

| Megladon MPO / MTP Fanout & Trunk Cables | | | |
|--|----------------|------------|--------------|
| <i>Multimode MPO / MTP Standard</i> | | | |
| | <i>Typical</i> | <i>Max</i> | <i>Units</i> |
| Insertion Loss | 0.2 | 0.5 | dB |
| Reflectance | | -20 | dB |

| Megladon MPO / MTP Fanout & Trunk Cables | | | |
|--|----------------|------------|--------------|
| <i>Singlemode SC, LC, ST, FC</i> | | | |
| | <i>Typical</i> | <i>Max</i> | <i>Units</i> |
| Insertion Loss | 0.2 | 0.4 | dB |
| Reflectance (UPC) | -58 | -55 | dB |
| Reflectance (APC) | -68 | -65 | |

| Megladon MPO / MTP Fanout & Trunk Cables | | | |
|--|----------------|------------|--------------|
| <i>Multimode SC, LC, ST, FC</i> | | | |
| | <i>Typical</i> | <i>Max</i> | <i>Units</i> |
| Insertion Loss | 0.2 | 0.4 | dB |
| Reflectance | -35 | -30 | dB |

MEGLADON®
MANUFACTURING GROUP, LTD

Your Fiber Optic Solutions Partner • Reliable - Rugged - Repeatable

12317 Technology Blvd., Ste. 100 • Austin, Texas • (512) 491-0006 • megladonmfg.com